

FOR SALE

\$ 390,000.00 USD

El Salvador - San Salvador

San Salvador

Listing ID: 003093475011

BUILDING FOR SALE – NEW ROSALES HOSPITAL & UTEC AREA Investment opportunity located on Primera Calle Poniente, in a strategic area with strong university, medical, and commercial activity, just a short distance from UTEC and the new Rosales Hospital. Land Area: 619 m² | 886.05 v² | Approx. 6,664 ft² Building Area: 772 m² on two levels Designed by renowned architect Ernesto H. de Sola, the property features:

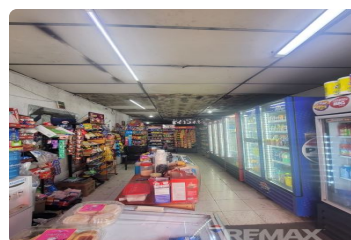
First Level: • 3 commercial units, each with a private restroom • Basement • Patio

Second Level: • 2 apartments with independent access

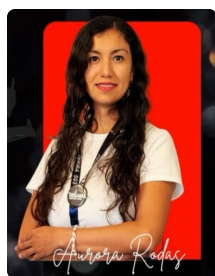
Apartment 1: • Living and dining area • Kitchen • Balcony • 1 bedroom • 1 full bathroom • Service area

Apartment 2: • Living and dining area • Kitchen • Balcony • 2 bedrooms • 1 full bathroom • Service area

Currently, 4 of the 5 units are leased, providing immediate...



SEE THIS PROPERTY ON THE MAP



AURORA RODAS

SALES AGENT

503 62072323

aurora.rodas@remax-terra503.com

<https://www.remax-centralamerica.com/show-agents-in-el-salvador/re-max-terra>



RE/MAX TERRA 503

Centro de Negocios edificio KINETIKA, Santa Tecla

Each office is independently owned and operated