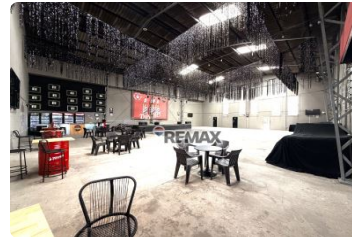
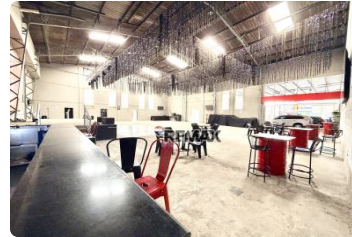


## FOR SALE

**\$ 995,000.00 USD**

El Salvador - San Salvador  
Soyapango  
Listing ID: 002522696020

Located in Ciudad Credisa, this property represents a unique opportunity for investors seeking a functional asset already in operation ??? ? Corner property with excellent visibility and strategic access?? 9,849 sq ft land | 12,594 sq ft construction (approx) ?? Currently operating as:?? BBQ restaurant?? Gym?? Warehouse spaces ?? Generate immediate income or reposition the property to fit your business model ??? Versatile infrastructure ready for multiple uses:?? 3-level building?? Industrial warehouse area?? Multi-purpose rooms?? Office spaces?? Storage areas?? Security guard booth ????? Water cistern ?? ?? Ideal for:?? Educational institutions?? Corporate offices?? Industrial operations? Religious organizations?? Institutional projects ?? Why invest here?? Income-producing property?? Strategic location in Soyapango?? High commercial exposure?? Strong adaptability and growth potential



SEE THIS PROPERTY ON THE MAP



PATY CUELLAR  
SALES AGENT  
503 71068287  
paty.cuellar@remax-elite.com.sv  
<https://remax-elite.com.sv>



RE/MAX ELITE

Urb. Lomas de Altamira, calle el Zenzontle #19-A, San Salvador, El Salvador

Each office is independently owned and operated