

FOR LEASE

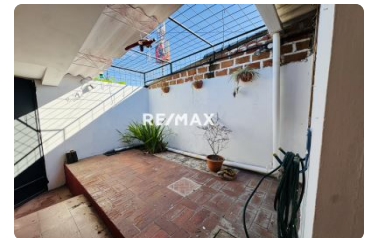
\$ 500.00 USD

El Salvador - Santa Ana

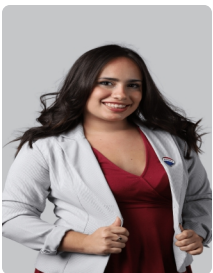
Santa Ana

Listing ID: 002522430059

Located on a main road, this property is ideal for offices or commercial use, offering excellent visibility and easy access. The property features a living and dining area, functional kitchen, 3 rooms that can be adapted as private offices or workspaces, 1 bathroom, and a pleasant garden area, perfect for a break space or a welcoming environment for clients. It also offers parking space inside the property as well as additional parking outside, providing convenience for staff and visitors. Its strategic location on Calle Poniente IVU Los 44, Santa Ana, makes it an excellent option for businesses looking to establish themselves in a high-traffic and well-connected area. Ideal for: administrative offices, clinics, professional services, or growing businesses seeking a prime location in Santa Ana.



[SEE THIS PROPERTY ON THE MAP](#)



ROSARIO FUENTES

SALES AGENT

503 78030023

rosario.fuentes@remax-elite.com.sv

<https://remax-elite.com.sv>



RE/MAX ELITE

Urb. Lomas de Altamira, calle el Zenzontle #19-A, San Salvador, El Salvador

Each office is independently owned and operated